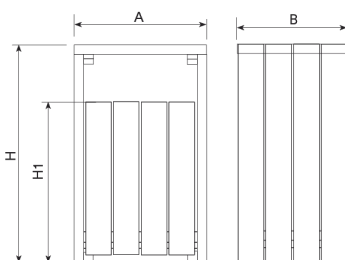
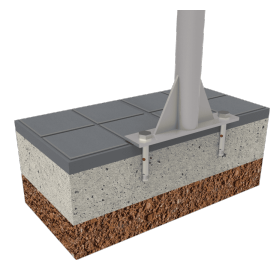




Litter bin made of ReBnew with door to facilitate the replacement of the bag. Opening on both sides.
Stainless steel screws.
Recommended anchoring: by means of three M8 expansion bolts depending on the surface and the project.



| Ref. | | A | B | H | H1 |
|-----------|---------|------|-----|------|-----|
| PA664PR | 90L | 580 | 565 | 1000 | 770 |
| PA664S2PR | 90L+90L | 1120 | 565 | 1000 | 770 |
| PA664S3PR | 90L+90L | 1660 | 565 | 1000 | 770 |



[Project sheet](#) | [CAD](#) | [Catalogue](#) | [Mounting instructions](#) | [HD image](#)