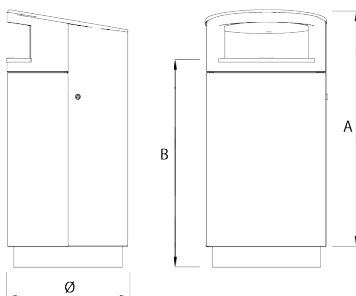


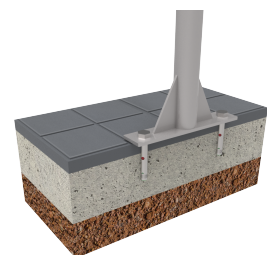
A litter bin with an 80-litre galvanised inner liner, made of iron with FERRUS treatment. Equipped with a lid, a front door opening system with a self-locking device, and a cigarette butt collector.

Highly robust due to the thickness of the metal plate and the reinforced structural frame. Standard triangular key closure system. The lid protects the inside of the bin from the wind and rain.

Recommended method of installation: Fixed to the ground with four Ø8 bolts, not supplied.



Ref.	A	B	C	H
PA690SBB	450	216	230	995



[Maintenance guide](#) | [Project sheet](#) | [CAD](#) | [Mounting instructions](#) | [HD image](#)

Great robustness thanks to its thickness and structural reinforcement skeleton. Lock with standard triangular key. 210° opening to facilitate the access from three different directions. Ideal to be installed close to a wall or any other vertical element. The cover protects the interior from the wind and rain.

Triple coating anti-rust treatment. Zinc-plated steel with silver grey polyester powder coating and protective varnish. Recommended anchoring: floor mounting by means of Ø10 screws, not supplied.



The constant improvement and evolution of our products may result in some modifications of the technical specifications and characteristics of the products without prior notice.

